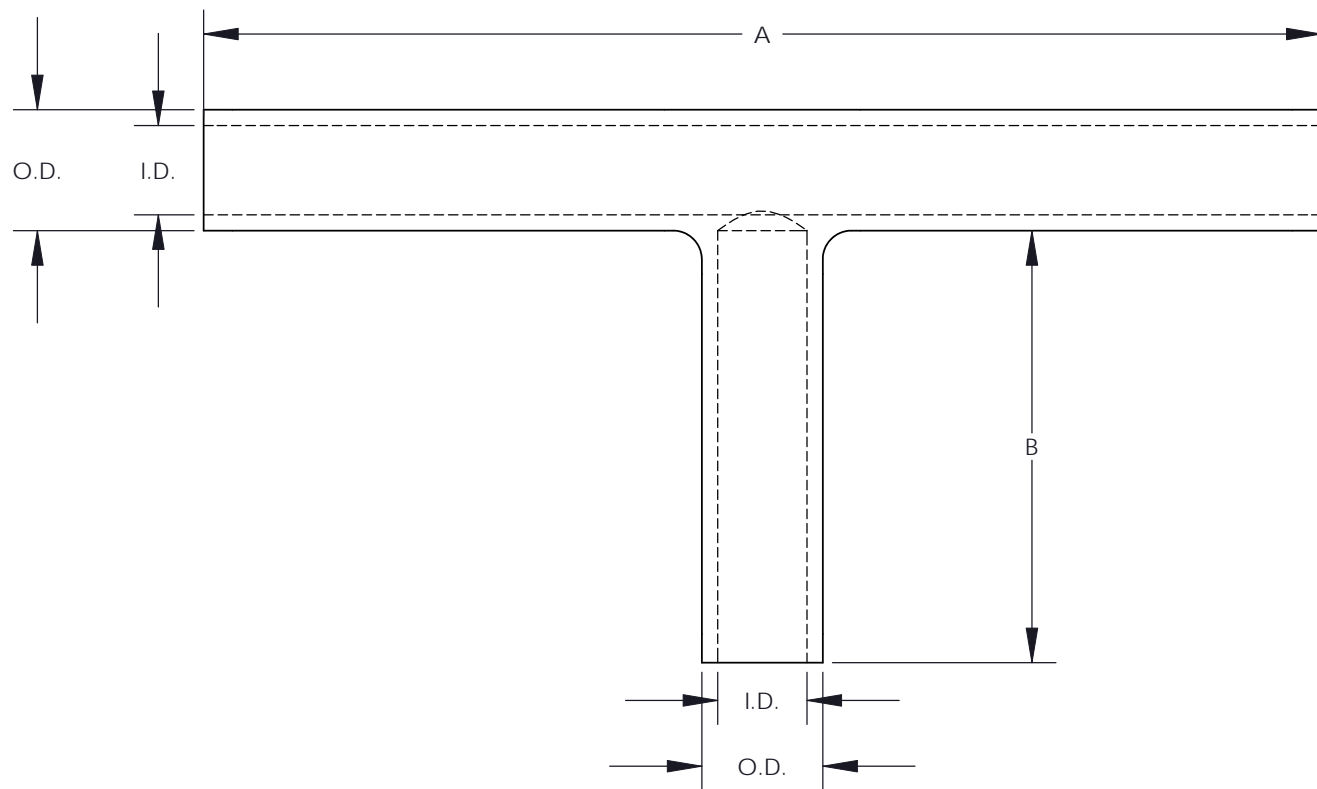


PANDUIT PART NUMBER	CONDUCTOR SIZE		DIMENSIONS IN INCHES						STD PKG QTY
			RUN		TAP		A	B	
	RUN	TAP	I.D.	O.D.	I.D.	O.D.			
SCT2-2	#2 AWG	#2 AWG	0.31	0.42	0.31	0.42	3.89	1.51	1
SCT1/0-1/0	#1/0 AWG	#1/0 AWG	0.39	0.52	0.39	0.52	4.03	1.51	1
SCT2/0-2/0	#2/0 AWG	#2/0 AWG	0.44	0.56	0.44	0.56	4.00	1.51	1
SCT4/0-1/0	#4/0 AWG	#1/0 AWG	0.55	0.69	0.39	0.52	4.01	1.51	1
SCT4/0-4/0	#4/0 AWG	#4/0 AWG	0.55	0.69	0.55	0.69	4.23	1.66	1
SCT250-250	250 kcmil	250 kcmil	0.60	0.75	0.60	0.75	4.26	1.63	1
SCT300-300	300 kcmil	300 kcmil	0.65	0.81	0.65	0.81	5.45	2.04	1
SCT350-350	350 kcmil	350 kcmil	0.70	0.88	0.70	0.88	5.53	2.00	1
SCT500-4/0	500 kcmil	#4/0 AWG	0.82	1.06	0.55	0.69	5.81	2.25	1
SCT500-500	500 kcmil	500 kcmil	0.83	1.06	0.83	1.06	6.06	2.51	1



PANDUIT PART NUMBER	STD WIRE SIZE	WIRE STRIP LENGTH (IN)	TOOL CHART				
			PANDUIT TOOL PART NUMBERS				
			CT-1700***	CT-720	CT-940CH** CT-930 CT-930CH CT-2931 CT-2930/L	CT-980 CT-980CH CT-2950* CT-2980 CT-2981	CT-2001 CT-3001 CT-2002
DIE PART NUMBER/COLOR CODE & DIE INDEX NUMBER/(NUMBER OF CRIMPS)							
SCT2-2	2 AWG	2	BROWN P33 (3)	CD-720-1 BROWN P33 (2)	CD-920-2 BROWN P33 (1)	STD (1)	CD-2001-2 BROWN P33 (2)
	2 AWG	1-9/16		CD-720-2 PINK P42 (2)	CD-920-1/0 PINK P42 (2)	STD (2)	CD-2001-1/0 PINK P42 (2)
SCT1/0-1/0	1/0 AWG	2-1/16	-----	CD-720-2 PINK P42 (2)	CD-920-1/0 PINK P42 (2)	STD (2)	CD-2001-1/0 PINK P42 (2)
	1/0 AWG	1-9/16		CD-720-2 BLACK P45 (3)	CD-920-2/0 BLACK P45 (3)	STD (2)	CD-2001-2/0 BLACK P45 (3)
SCT2/0-2/0	2/0 AWG	2-1/16	-----	CD-720-3 PURPLE P54 (3)	CD-920-4/0 PURPLE P54 (3)	STD (2)	CD-2001-4/0 PURPLE P54 (3)
	2/0 AWG	1-9/16		CD-720-2 PINK P42 (3)	CD-920-1/0 PINK P42 (3)	STD (2)	CD-2001-1/0 PINK P42 (3)
SCT4/0-1/0	4/0 AWG	2-1/16	-----	CD-720-3 PURPLE P54 (3)	CD-920-4/0 PURPLE P54 (3)	STD (2)	CD-2001-4/0 PURPLE P54 (3)
	1/0 AWG	1-9/16		CD-720-2 PINK P42 (3)	CD-920-1/0 PINK P42 (3)	STD (2)	CD-2001-1/0 PINK P42 (3)
SCT4/0-4/0	4/0 AWG	2-1/8	-----	CD-720-3 PURPLE P54 (3)	CD-920-4/0 PURPLE P54 (3)	STD (2)	CD-2001-4/0 PURPLE P54 (3)
	4/0 AWG	1-11/16		CD-720-3 YELLOW P62 (4)	CD-920-250 YELLOW P62 (3)	STD (2)	CD-2001-250 YELLOW P62 (3)
SCT250-250	250 kcmil	2-3/16	-----	CD-720-4 WHITE P66 (4)	CD-920-300 WHITE P66 (3)	STD (3)	CD-2001-300 WHITE P66 (4)
	250 kcmil	1-11/16		CD-720-5 RED P71 (4)	CD-920-350 RED P71 (3)	STD (3)	CD-2001-350 RED P71 (3)
SCT300-300	300 kcmil	2-13/16	-----	CD720-7 BROWN P87 (4)	CD-920-500 BROWN P87 (3)	STD (3)	CD-2001-500 BROWN P87 (4)
	300 kcmil	2-1/16		CD-720-3 PURPLE P54 (4)	CD-920-4/0 PURPLE P54 (4)	STD (3)	CD-2001-4/0 PURPLE P54 (4)
SCT350-350	350 kcmil	2-13/16	-----	CD-720-7 BROWN P87 (4)	CD-920-500 BROWN P87 (3)	STD (3)	CD-2001-500 BROWN P87 (4)
	350 kcmil	2-1/16		CD-720-3 PURPLE P54 (4)	CD-920-4/0 PURPLE P54 (4)	STD (3)	CD-2001-4/0 PURPLE P54 (4)
SCT500-4/0	500 kcmil	2-15/16	-----	CD-720-7 BROWN P87 (4)	CD-920-500 BROWN P87 (3)	STD (3)	CD-2001-500 BROWN P87 (4)
	4/0 AWG	2-5/16		CD-720-3 PURPLE P54 (4)	CD-920-4/0 PURPLE P54 (4)	STD (3)	CD-2001-4/0 PURPLE P54 (4)
SCT500-500	500 kcmil	3-1/8	-----	CD-720-7 BROWN P87 (4)	CD-920-500 BROWN P87 (4)	STD (3)	CD-2001-500 BROWN P87 (4)
	500 kcmil	2-9/16		CD-720-7 BROWN P87 (4)	CD-920-500 BROWN P87 (4)	STD (3)	CD-2001-500 BROWN P87 (4)

\*MAXIMUM SIZE: 250 kcmil  
 \*\*CD-920 DIES CAN BE USED WITH CT-940CH AND CT-2940 TOOLS WITH CD-940-DA ADAPTER  
 \*\*\* THE CT-1700 CRIMP DIE POCKETS ARE INTEGRATED INTO THE TOOL FRAME

NOTES:

- MADE FROM PURE ELECTROLYTIC SEAMLESS COPPER TUBING
- HOT TIN DIPPED FOR CORROSIVE RESISTANCE
- NORMAL VOLTAGE RATING 600V

				<b>PANDUIT CORP. TINLEY PARK, ILLINOIS</b>					
				<b>COPPER T SPLICE - SCT SERIES CUSTOMER DRAWING</b>					
03	3/11	JHNU	JHNU	REVISED RUN I.D. FOR SCT500-4/0, SCT500-500: WAS .84, REVISED RUN O.D. FOR SCT1/0-1/0: WAS .51, REVISED TAP I.D. FOR SCT500-500: WAS .84, REVISED TAP O.D. FOR SCT1/0-1/0, SCT4/0-1/0: WAS .51, REVISED A DIM FOR SCT2-2: WAS 3.88, REVISED A DIM FOR SCT1/0-1/0, SCT4/0-1/0: WAS 4.00, REVISED A DIM FOR SCT4/0-4/0: WAS 4.19, REVISED A DIM FOR SCT250-250: WAS 4.25, REVISED A DIM FOR SCT300-300: WAS 5.44, REVISED A DIM FOR SCT350-350: WAS 5.50, REVISED B DIM FOR SCT2-2, SCT1/0-1/0, SCT2/0-2/0, SCT4/0-1/0: WAS 1.50, REVISED B DIM FOR SCT4/0-4/0: WAS 1.63, REVISED B DIM FOR SCT300-300: WAS 2.00, REVISED B DIM FOR SCT500-500: WAS 2.50	N41199BB-C41199	FLD	FLD	UNLESS OTHERWISE SPECIFIED DIMENSIONAL TOLERANCES ARE: (.X) ±            (.XXX) ± (.XX) ±            ANGLES ±	UNLESS OTHERWISE SPECIFIED, ALL DIMENSIONS ARE GIVEN IN INCHES, THIRD ANGLE PROJECTION
02	3/10	JHNU	JHNU	REVISED DIE FOR CT-2001, P/N SCT4/0-1/0: PURPLE 54 WAS ORANGE 50					
01	3/10	JHNU	JHNU	REVISED DIE FOR SCT4/0-1/0: PURPLE 54 WAS ORANGE 50 CONVERTED DWG TO SOLIDWORKS			DRAWN BY T SMA	MAT'L:	
00	8/96	T SMA		DRAWING RELEASED			DATE 8/96	SCALE NONE	
REV	DATE	BY	CHK	DESCRIPTION	ECN	-R	SUP	DWG B SIZE	
							CHK'D	DRAWING NO / CAD FILE C41199_03	